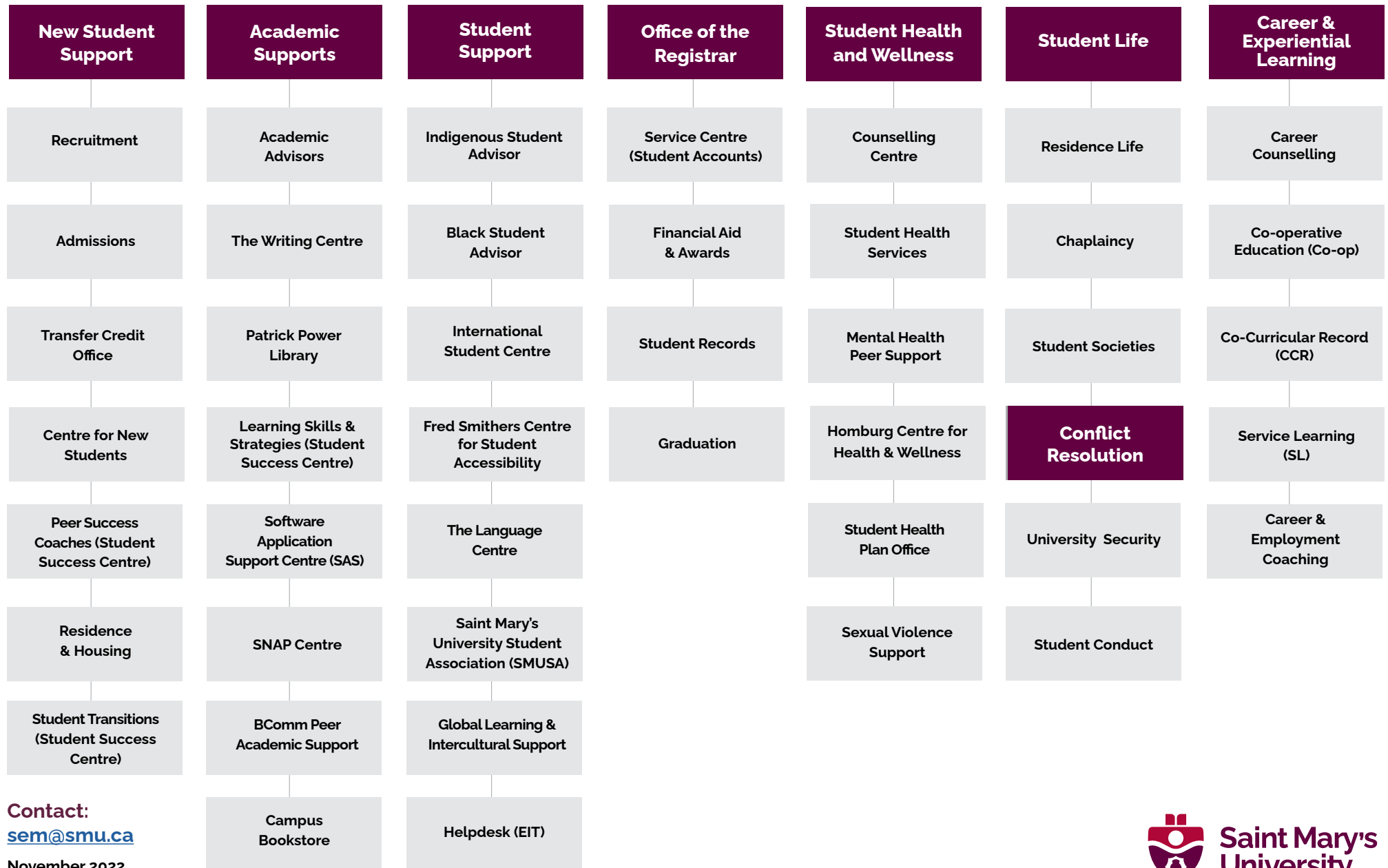


# Student Help Tree

A resource designed to help students find the Saint Mary's supports and services they need.



Contact:  
[sem@smu.ca](mailto:sem@smu.ca)

November 2022



### Academic Advising

**Support:** Academic planning, program requirements, academic regulations & processes

**E:** Arts: [BAadvising@smu.ca](mailto:BAadvising@smu.ca);

Commerce: [bcom.advising@smu.ca](mailto:bcom.advising@smu.ca);

Science: [advisor.science@smu.ca](mailto:advisor.science@smu.ca)

### Admissions

**Support:** Admissions questions and application status, UPREP courses, entrance scholarships

**E:** [recruitment@smu.ca](mailto:recruitment@smu.ca)

### BComm Peer Academic Support

**Support:** Peer academic support for core Commerce courses

**E:** [sobey.bcomm@smu.ca](mailto:sobey.bcomm@smu.ca)

### Black Student Advisor

**Support:** Black student engagement and support

**E:** [Bria.Symonds@smu.ca](mailto:Bria.Symonds@smu.ca) or  
[Student.services@smu.ca](mailto:Student.services@smu.ca)

### Bookstore

**Support:** Course materials; school supplies, memorabilia/gifts

**E:** [bookstore@smu.ca](mailto:bookstore@smu.ca)

### Centre for New Students

**Support:** Course registration, campus tours

**E:** [cns@smu.ca](mailto:cns@smu.ca)

### Chaplaincy

**Support:** Chapel, social events, spiritual counselling/guidance

**E:** [chaplain@smu.ca](mailto:chaplain@smu.ca)

### Career Counselling

**Support:** Career planning, decision-making, addressing career anxiety

**E:** [cel@smu.ca](mailto:cel@smu.ca)

### Career & Employment Coaching

**Support:** Job search support: resumes, cover letters, networking, interviews

**E:** [cel@smu.ca](mailto:cel@smu.ca)

### Co-curricular Record

**Support:** Volunteer and leadership opportunities

**E:** [ccr@smu.ca](mailto:ccr@smu.ca)

### Co-operative Education

**Support:** Secure work experience related to academic studies, assistance with co-op job search

**E:** [coop@smu.ca](mailto:coop@smu.ca)

### Counselling Centre

**Support:** Personal counselling; mental health support and education

**E:** [counselling@smu.ca](mailto:counselling@smu.ca)

### EIT Helpdesk (Enterprise Information Technology)

**Support:** Accounts & passwords, wifi/SMU network issues

**E:** [helpdesk@smu.ca](mailto:helpdesk@smu.ca)

### Financial Aid & Awards

**Support:** Scholarships, bursaries, student loans, financial literacy

**E:** [financial.aid@smu.ca](mailto:financial.aid@smu.ca)

### Fred Smithers Centre for Student Accessibility

**Support:** Accessibility services, test/exam accommodations

**E:** [fredsmithers.centre@smu.ca](mailto:fredsmithers.centre@smu.ca)

### Global Learning & Intercultural Support

**Support:** Study abroad, international field study course

**E:** [global@smu.ca](mailto:global@smu.ca)

### Graduation

**Support:** Graduation applications, convocation inquiries

**E:** [graduation@smu.ca](mailto:graduation@smu.ca)

### Homburg Centre for Health & Wellness

**Support:** Wellness programs, studio/fitness facilities, varsity athletics

**P:** 902-420-5429

### Indigenous Student Advisor

**Support:** Engaging and supporting Indigenous students

**E:** [Brady.Paul@smu.ca](mailto:Brady.Paul@smu.ca)

### International Student Centre

**Support:** Visa & study permit, social activities, student advising

**E:** [international.centre@smu.ca](mailto:international.centre@smu.ca)

### The Language Centre

**Support:** Help students achieve language goals

**E:** [language@smu.ca](mailto:language@smu.ca)

### Learning Skills and Strategies

**Support:** Academic support, meeting course expectations, self-regulation strategies

**E:** [student.success@smu.ca](mailto:student.success@smu.ca)

### Mental Health Peer Support

**Support:** One-on-one support for mental health

**E:** [peer.support@smu.ca](mailto:peer.support@smu.ca)

### Office of the Registrar

**Support:** Academic standing, academic calendar, records, appeals

**E:** [registrar@smu.ca](mailto:registrar@smu.ca)

### Patrick Power Library

**Support:** Books/journals, research help, study space, student ID

**E:** [research@smu.ca](mailto:research@smu.ca)

### Peer Success Coaches

**Support:** Peer support for new students and first year transition

**E:** [peercoaching@smu.ca](mailto:peercoaching@smu.ca)

### Recruitment

**Support:** Prospective students, campus tours, admission requirements

**E:** [recruitment@smu.ca](mailto:recruitment@smu.ca)

### Residence Life

**Support:** Residence programming, support for students in residence

**E:** [residence.programming@smu.ca](mailto:residence.programming@smu.ca)

### Residence & Housing

**Support:** Housing applications, residence fees

**E:** [residence.housing@smu.ca](mailto:residence.housing@smu.ca)

### Service Centre

**Support:** Confirmation of enrolment, student accounts, transcripts

**E:** [service.centre@smu.ca](mailto:service.centre@smu.ca)

### Service Learning

**Support:** Course integrated community-based experience

**E:** [service.learning@smu.ca](mailto:service.learning@smu.ca)

### Sexual Violence Support

**Support:** Resources for people who have experienced sexual violence

**E:** [sexualviolence@smu.ca](mailto:sexualviolence@smu.ca)

### SMUSA (Saint Mary's University Student Association)

**Support:** Student advocacy, husky patrol, food room, transit passes

**E:** [info@smusa.ca](mailto:info@smusa.ca)

### SNAP Centre (Science Numeracy & Academic Proficiency)

**Support:** Peer tutoring for first-year science and engineering courses

**E:** [snap@smu.ca](mailto:snap@smu.ca)

### Software Application Support Centre (SAS)

**Support:** Online platform assistance (Brightspace, MS Teams, Zoom)

**E:** [sas@smu.ca](mailto:sas@smu.ca)

### Student Conduct

**Support:** Non-academic misconduct offences, complaints

**E:** [student.conduct@smu.ca](mailto:student.conduct@smu.ca)

### Student Health Services

**Support:** Medical care, medical appointments, sexual violence support

**E:** [student.health@smu.ca](mailto:student.health@smu.ca)

### Student Health Plan Office

**Support:** Health and dental plan coverage information

**E:** [healthplan.smusa@smu.ca](mailto:healthplan.smusa@smu.ca)

### Student Success Centre

**Support:** Peer success coaching, learning skills and strategies, student life and events

**E:** [student.success@smu.ca](mailto:student.success@smu.ca)

### Student Transitions

**Support:** Welcome events, student life activities, alcohol & drug education

**E:** [welcome@smu.ca](mailto:welcome@smu.ca)

### Student Societies

**Support:** Society directory, resources, support

**E:** [society.coordinator@smu.ca](mailto:society.coordinator@smu.ca)

### Transfer Credit Office

**Support:** Transfer credit assessment

**E:** [transfer@smu.ca](mailto:transfer@smu.ca)

### University Security

**Support:** Campus security, parking

**E:** [security@smu.ca](mailto:security@smu.ca)

### Writing Centre:

**Support:** Academic communication support, tutoring, writing resources

**E:** [writing@smu.ca](mailto:writing@smu.ca)