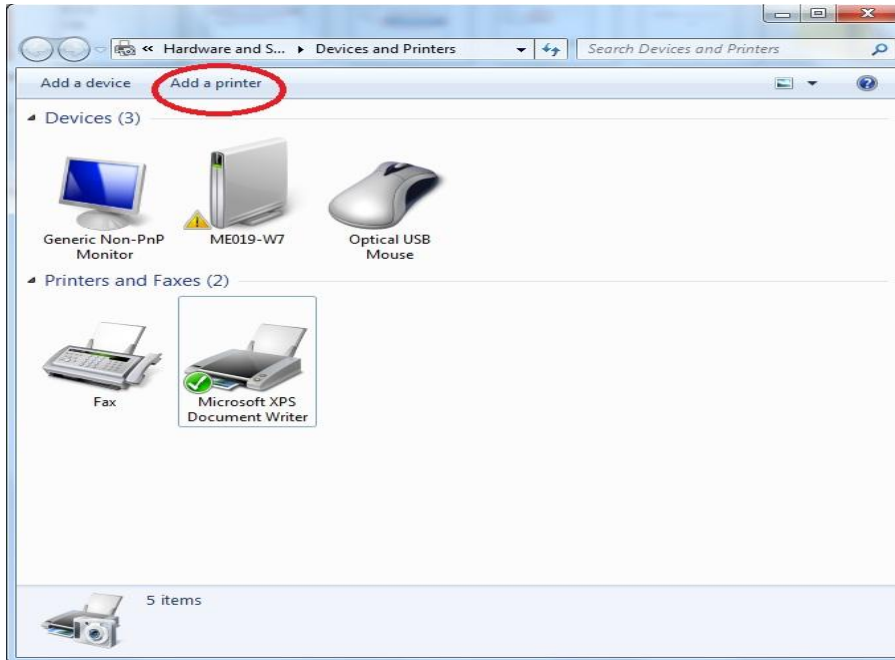
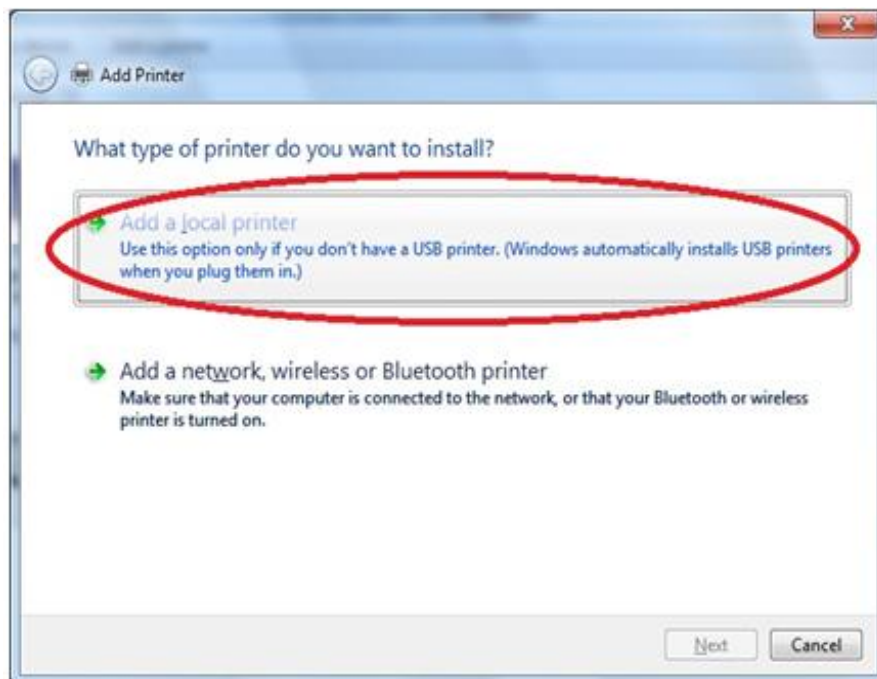


Windows 7 - Wireless Printing – Patrick Power Library - Saint Mary's University
December 2010

1. To set-up your Windows 7 laptop for wirelessly printing, begin by navigating to “Devices and Printers” from the start menu. From this window, click the “Add a printer” button.

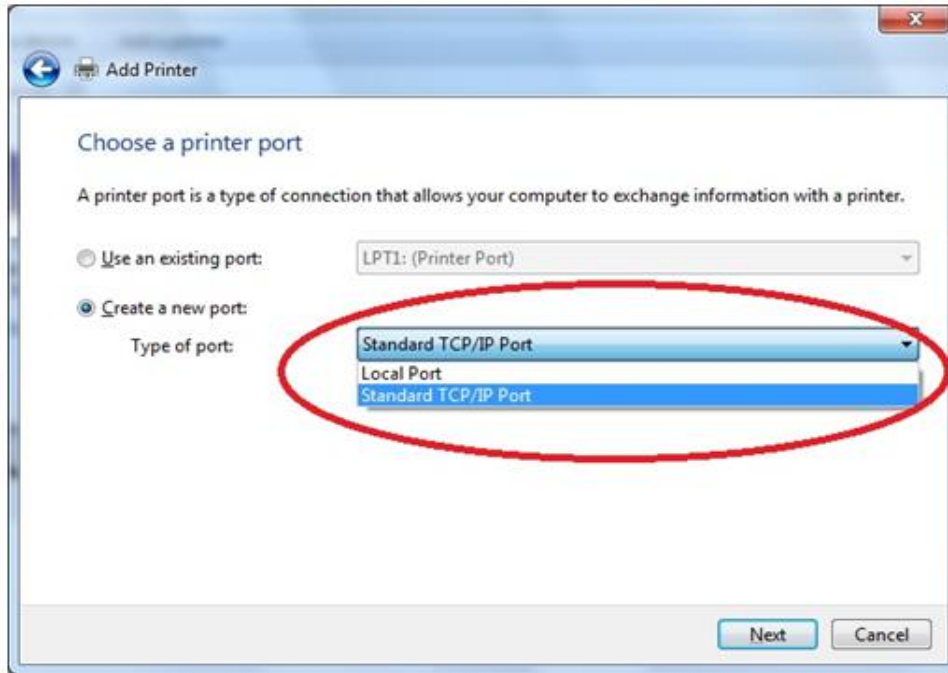


2. A dialogue box will open, asking you to choose the type of printer you would like to install. Choose “Add a local printer.” Click “Next.”

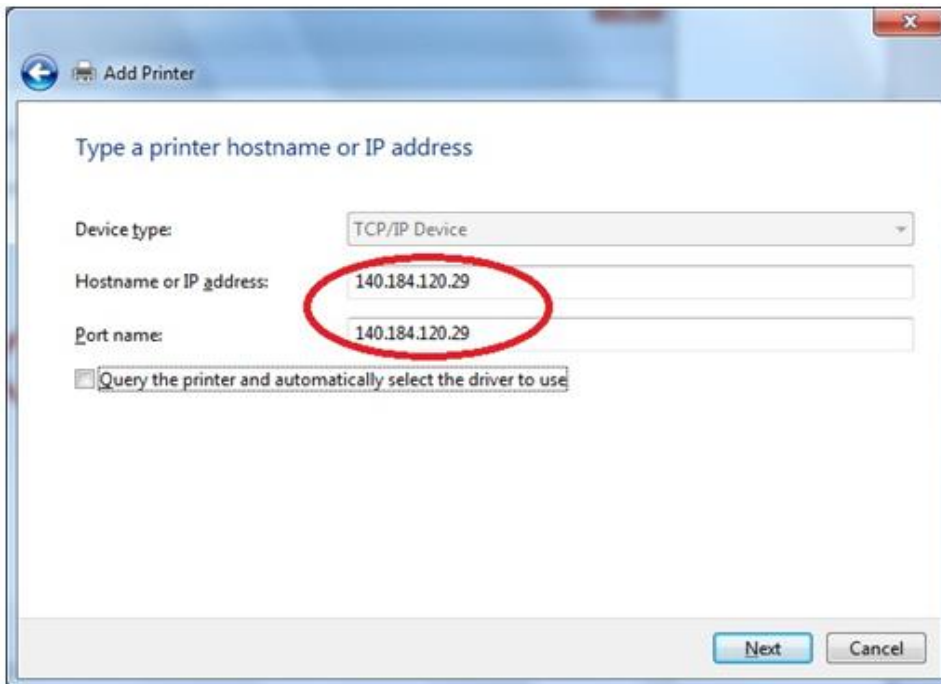


Windows 7 - Wireless Printing – Patrick Power Library - Saint Mary's University
December 2010

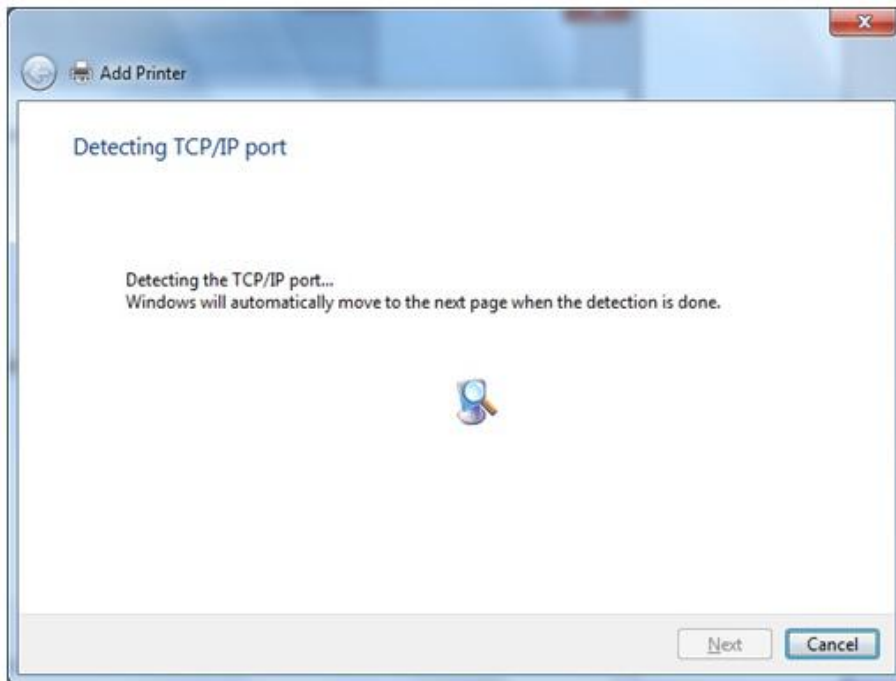
3. Next, you will be asked to choose a printer port. Click the bullet for “Create a new port:” and choose “Standard TCP/IP Port.” Click “Next” to proceed.



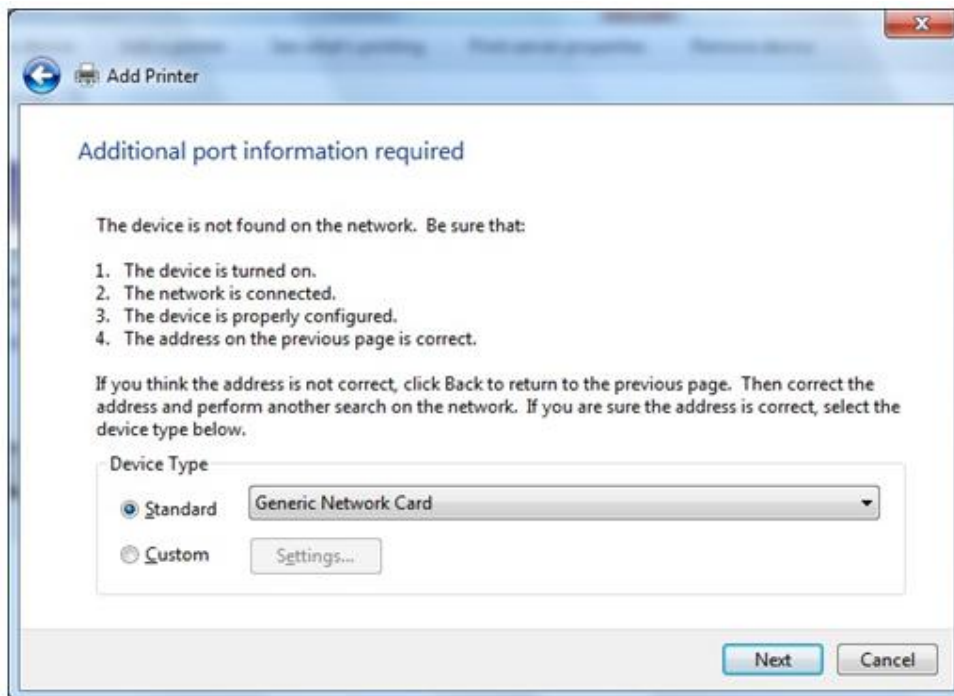
4. Type “140.184.120.29” in both the “Hostname or IP address” and “Port name” boxes. Click “Next.”



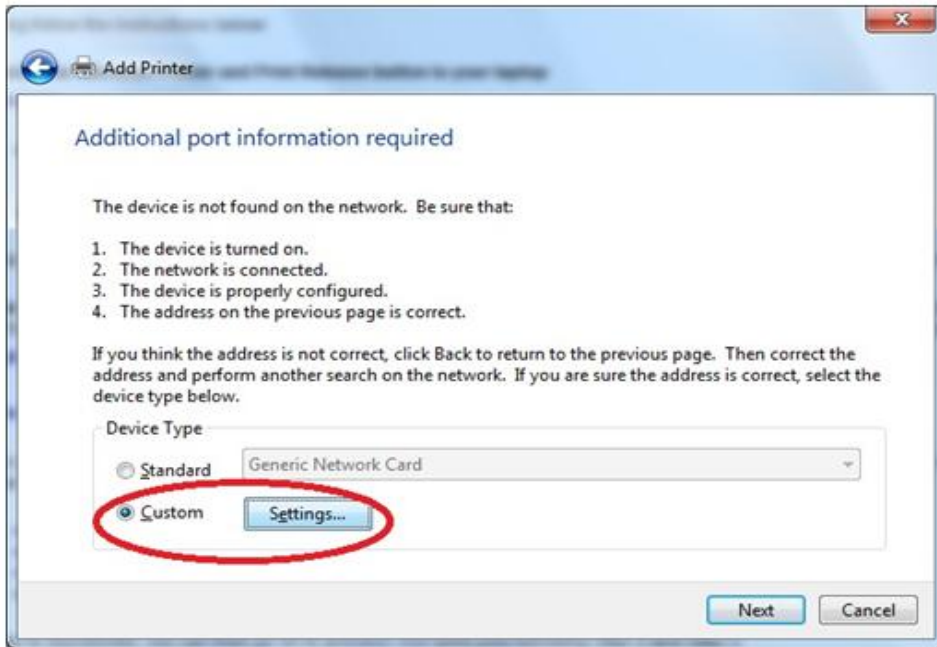
5. A dialog box will appear notifying you that Windows is detecting the TCP/IP port.



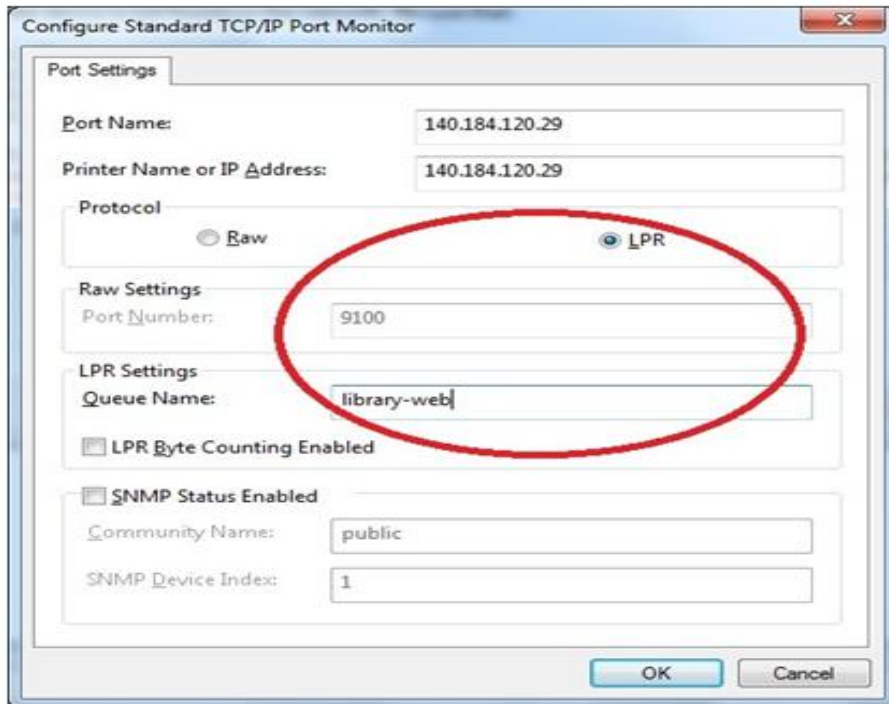
6. Next, a dialog box will inform you that additional port information is required.



7. Select the “Custom” bullet and click the “Settings” button.

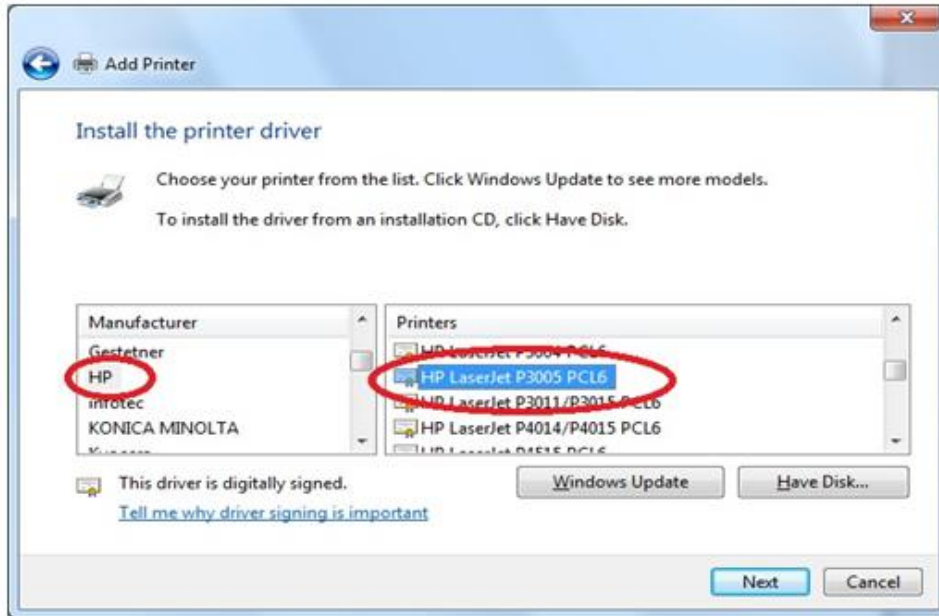


8. In the settings window, change the Protocol type from “Raw” to “LPR” and type “library-web” into the “Queue Name” box under “LPR Settings.” Click “OK” and then “Next” to proceed.

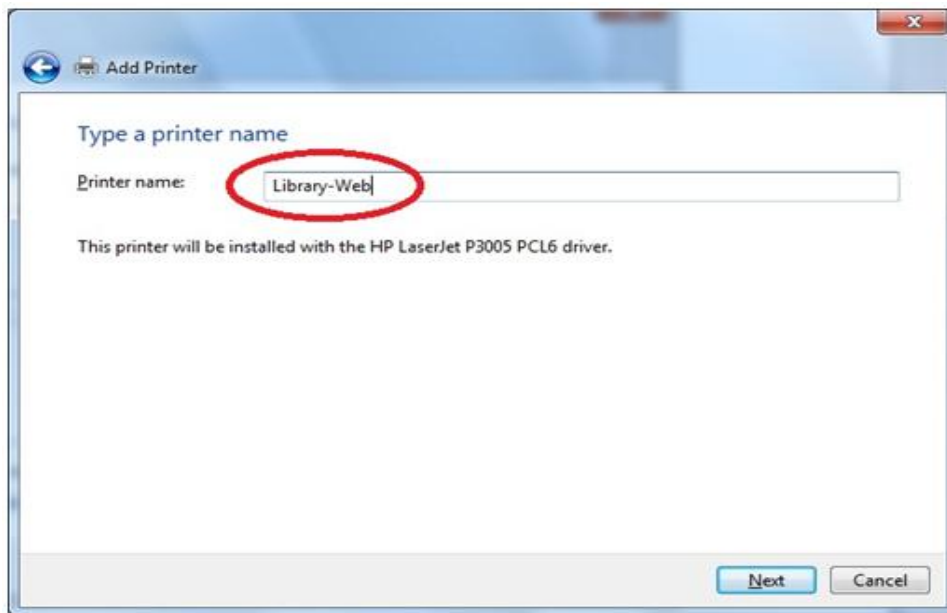


Windows 7 - Wireless Printing – Patrick Power Library - Saint Mary's University
December 2010

- Windows will provide a list of printer manufacturers and model designations. Choose “HP” from the manufacturer list, and “HP LaserJet P3005 PCL6” from the list of printer models. Click “Next.”



- The next screen will ask you to give a name to the printer. Type “Library-Web” and click “Next” to proceed. On the final screen, click “Finish” to complete the installation of the printer.



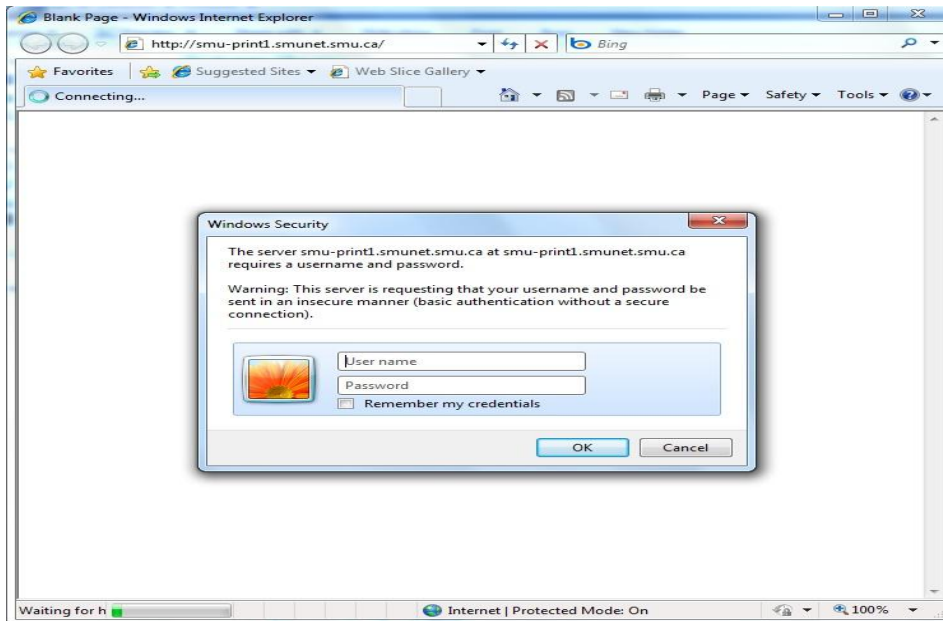
You are now ready to wirelessly print to the library printers.

Windows 7 - Wireless Printing – Patrick Power Library - Saint Mary's University
December 2010

11. When you are ready to print your document, print as you normally would, from MS Word, Powerpoint or other Windows software. Sselect “Print” from the file menu, and make sure that “Library-Web” is your selected printer. Click “OK” to send your document to the print queue.

Open your web browser and proceed to <http://smu-print1.smunet.smu.ca>

A dialog box will appear asking for a username and password. Input your S number and password in the appropriate fields.



After logging in, your document will appear in the queue. Check the appropriate box for the document you wish to print, and click the “Print” button. Your document is now released and will print to one of the two public printers on the main floor of the library, next to the bank of five guest computers.

