



# Wireless Connectivity Windows 7

**Saint Mary's University is continuing to expand the wireless network on campus. For an up-to-date listing of wireless hot spots, visit: [www.smu.ca/itss/wireless](http://www.smu.ca/itss/wireless).**

## You Must:

1. Have an S#.
2. Abide with Saint Mary's Technology Use Policy to use the wireless internet access.
3. Have the following minimum requirements:
  - Laptop with wireless card
  - Windows 7
  - A Saint Mary's University user account.

## Getting Started:

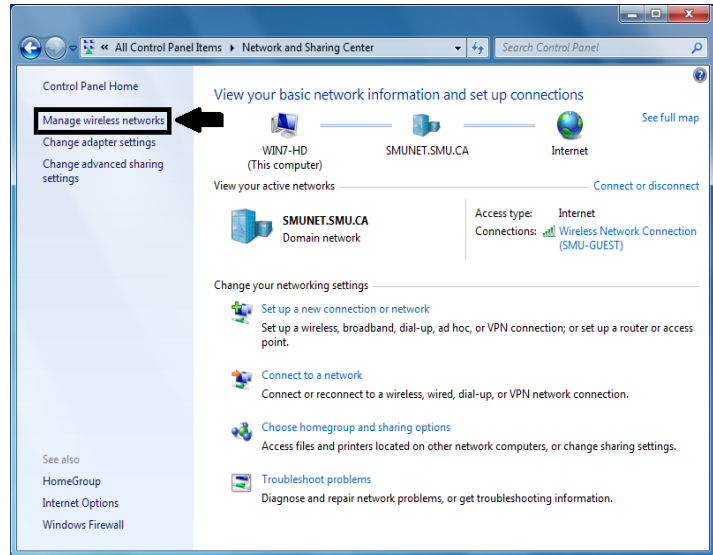
You will have to set up the network configuration on your laptop to access the wireless network.

The following step-by-step instructions will guide you through the rest of the set-up process.

You need to complete this process **one-time only!**

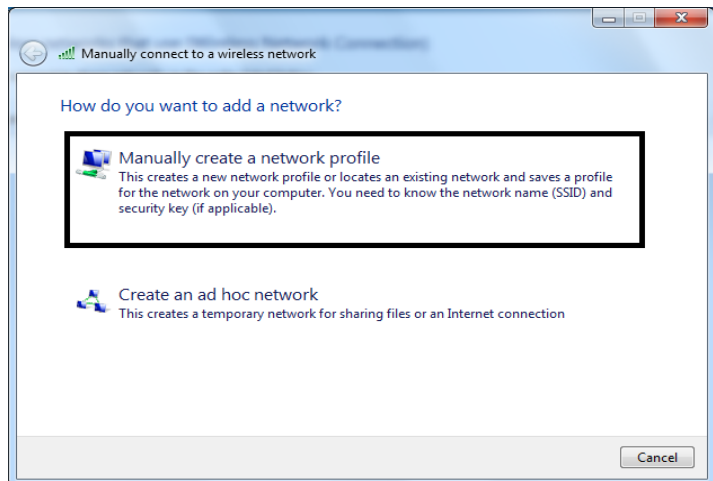
## STEP 1

Click on the start button and select **Control Panel**. Click on **Network and Sharing Center**. Then, click on **Manage wireless networks** on the left.



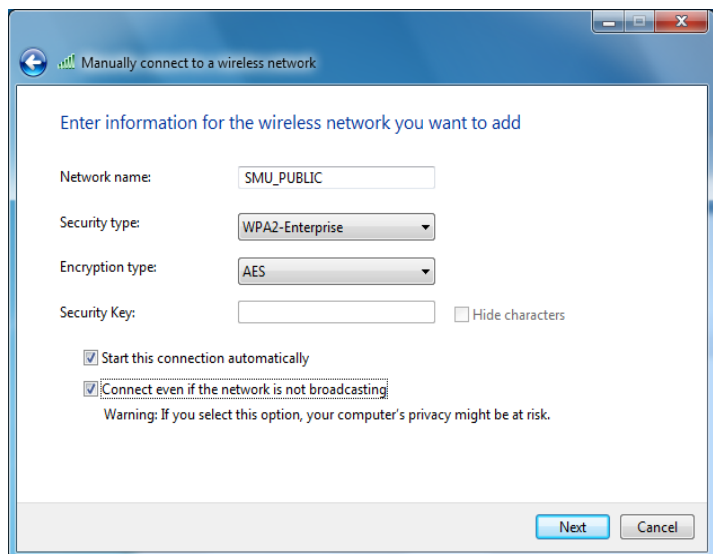
## STEP 2

From the **Manage Wireless Networks** window, click on **Add**. Select **Manually create a network profile**.



## STEP 3

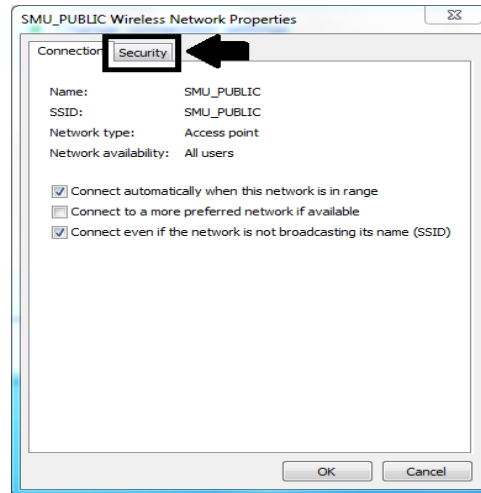
For the Network name type in **"SMU\_PUBLIC"** without quotes. Change the network authentication to **WPA2-Enterprise** and data encryption to **AES**. Check the box for **Connect even if the network is not broadcasting**. Click the Next button in the bottom right corner of this window.



#### STEP 4

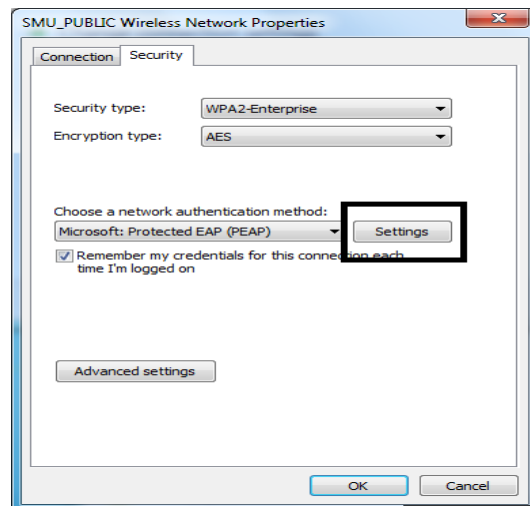
Click on **Change connection settings**.

A new window will appear with three check boxes on it. **UNCHECK** the middle box and click on the **Security Tab** at the top.



#### STEP 5

Select **WPA2-Enterprise** for Security type. Change the network authentication drop down to **Microsoft Protected EAP (PEAP)**. Then click the **Settings** button to the right of the drop down.



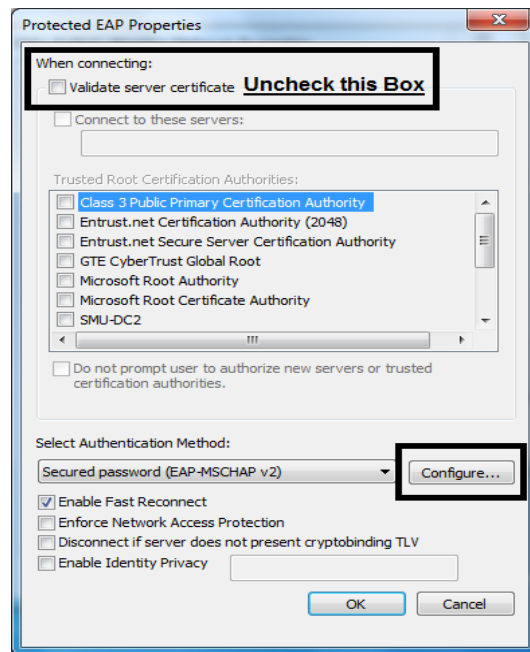
#### STEP 6

**UNCHECK** "Validate server certificate".

Ensure "**Select Authentication Method: Secured password (EAP-MSCHAP v2)**" is selected in the drop down window.

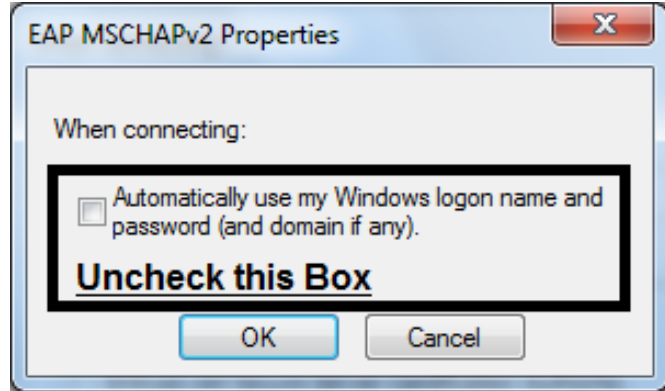
Ensure the check box for **Disconnect if server does not present cryptobinding TLV** is **NOT** checked.

Click on **configure** and proceed to **STEP 7**.



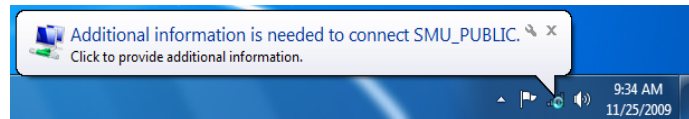
STEP 7

**UN**check the box for “**Automatically use my Windows logon name and password (and domain if any)**”. Then click OK on all open dialog boxes to complete the setup.



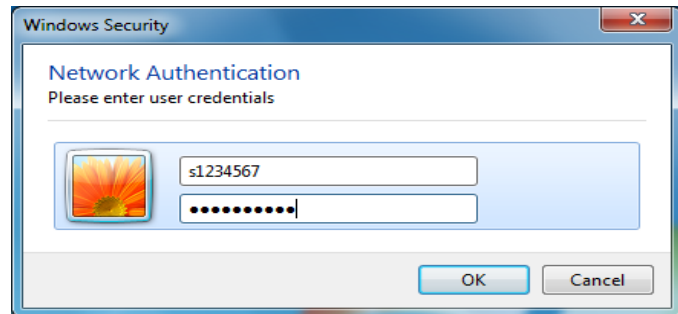
STEP 8

Wait a few seconds and you should see something similar to this in your taskbar at the bottom of your screen. Click on the message and you should be prompted with a login window.



STEP 9

Enter your username and password, then click OK.



**For an updated list of hot spots on campus, visit:**  
**[www.smu.ca/itss/wireless](http://www.smu.ca/itss/wireless)**

For more information contact:

**ITSS Help Desks**  
Loyola 268 &  
The Atrium  
Phone: 496-8111

Or visit: [www.smu.ca/itss/wireless](http://www.smu.ca/itss/wireless)

