



Wireless Connectivity For XP

Saint Mary's University is continuing to expand the wireless network on campus. For an up-to-date listing of wireless hot spots, visit: www.smu.ca/itss/wireless.

You Must:

1. Have an S#.
2. Abide with Saint Mary's Technology Use Policy to use the wireless internet access.
3. Have the following minimum requirements:
 - Laptop with wireless card
 - Windows XP with Service Pack 2 or greater
 - Windows 2000 with SP2
 - A Saint Mary's University user account.

Getting Started:

You will have to set up the network configuration on your laptop to access the wireless network.

The following step-by-step instructions will guide you through the rest of the set-up process.

You need to complete this process **one-time only!**

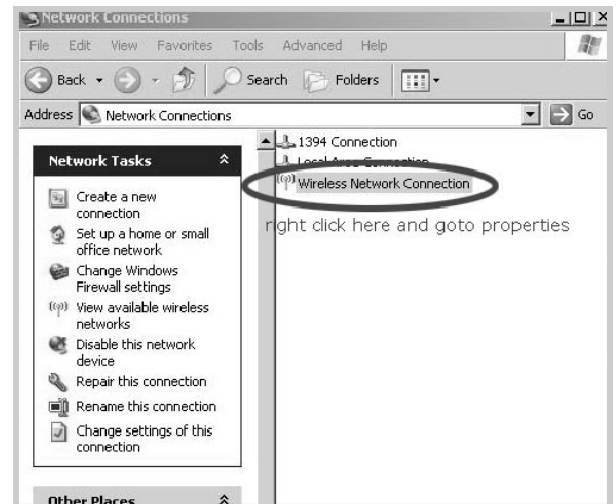
STEP 1

Click on the start button and click on Control Panel. You should then see a list of icons. Double click on Network Connections.



STEP 2

You should see the Network Connections window box now. You should see something similar to below. Right click on Wireless Network Connection (or your wireless NIC device name) similar to below. Right click on Wireless Network Connection (or your wireless NIC device name)



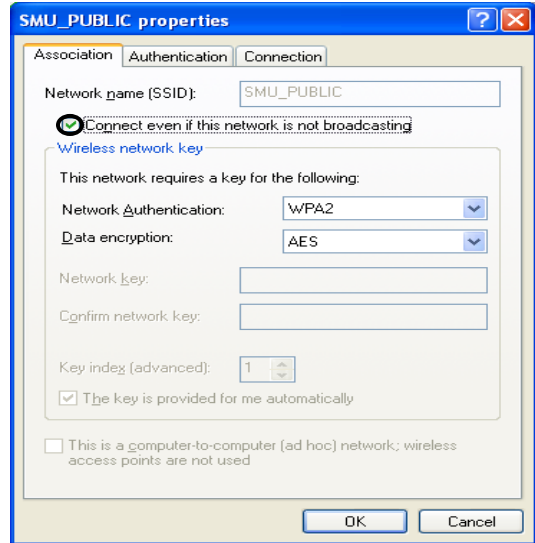
STEP 3

You should see the Wireless Network Connection Properties dialog box. There should be 3 tabs on the top: General, Wireless Networks, Advanced. Click on the Wireless Networks Tab. Make sure "use windows to configure my wireless network settings" is checked. Click on Add...



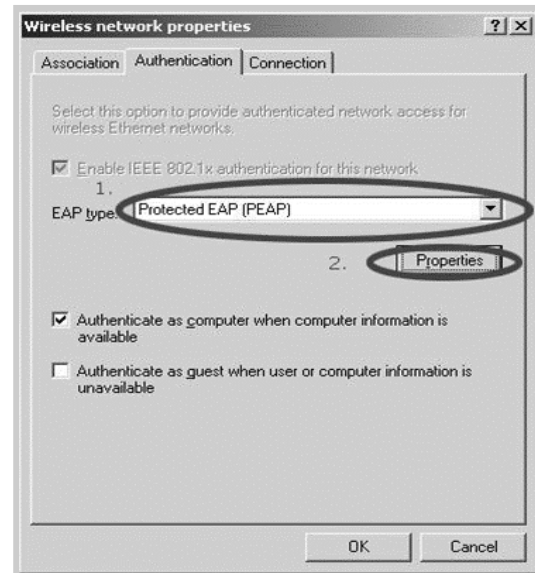
STEP 4

For the Network name (SSID) type in "SMU_PUBLIC" without quotes. Ensure that you **CHECK** the box next to **Connect even if this network is not broadcasting**. Change the network authentication to **WPA2** and data encryption to **AES**. Click on the Authentication tab at the top and go to Step 5.



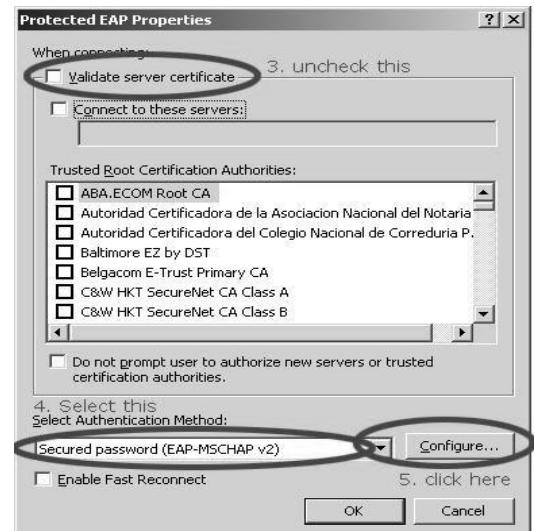
STEP 5

Change the EAP type to "Protected EAP (PEAP)". Click on properties and go to Step 6.



STEP 6

Uncheck "Validate server certificate" and make sure for Select Authentication Method, "Secured password (EAP-MSCHAP v2)" is enabled. Click on configure and go to Step 7.



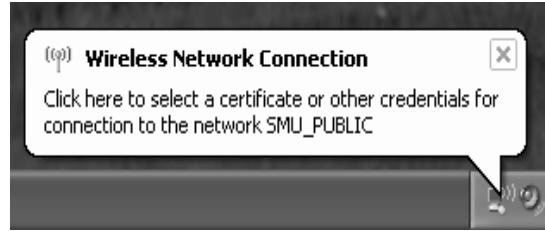
STEP 7

Uncheck the “Automatically use my Windows logon name and password (and domain if any)” box. Then keep clicking OK to get out of the wireless configuration.



STEP 8

Wait a few seconds and you should see something similar to this in your taskbar at the bottom of your screen. Click on the message and you should be prompted with a login window.



STEP 9

Enter your username and password, leave logon domain blank. Click OK.



For more information contact:

ITSS Help Desk
Loyola 268 &
The Atrium
Phone: 496-8111

Or visit: www.smu.ca/itss/wireless

