



Wireless Connectivity VISTA

Saint Mary's University is continuing to expand the wireless network on campus. For an up-to-date listing of wireless hot spots, visit: www.smu.ca/itss/wireless.

You Must:

1. Have an S#.
2. Abide with Saint Mary's Technology Use Policy to use the wireless internet access.
3. Have the following minimum requirements:
 - Laptop with wireless card
 - Vista
 - A Saint Mary's University user account.

Getting Started:

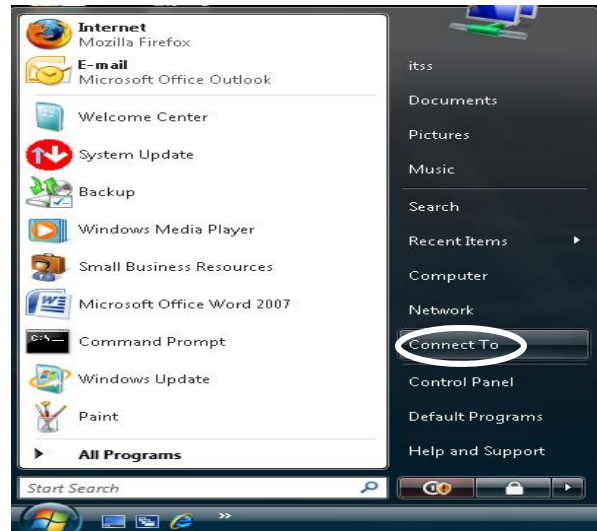
You will have to set up the network configuration on your laptop to access the wireless network.

The following step-by-step instructions will guide you through the rest of the set-up process.

You need to complete this process **one-time only!**

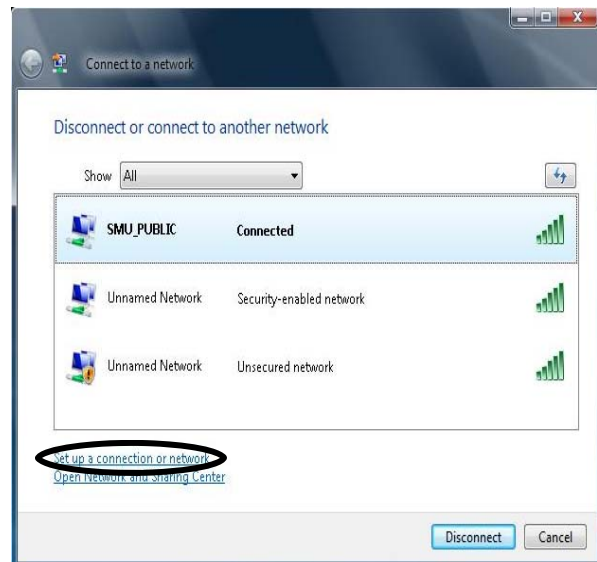
STEP 1

Click on the start button and click on **Connect To**.



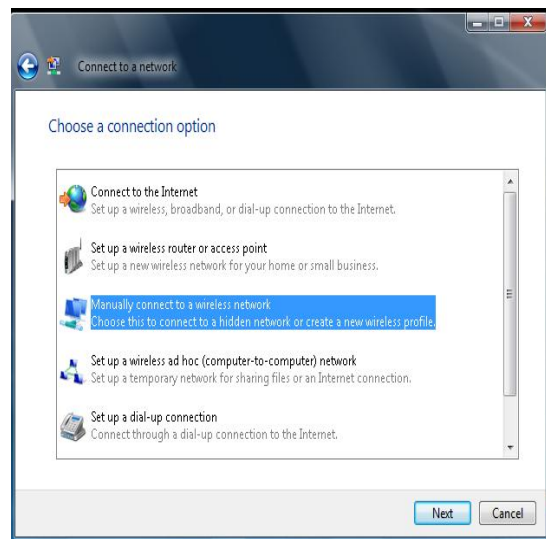
STEP 2

In the **Connect to a network** window, you will see a link on the bottom left corner for **Set up a connection or network**. Click on this link.



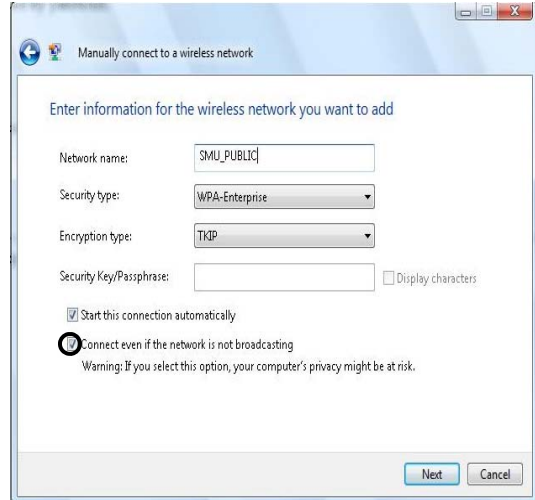
STEP 3

Select **Manually connect to a wireless network**. Click the **Next** button in the bottom right corner of this window.



STEP 4

For the Network name type in "**SMU_PUBLIC**" without quotes. Change the network authentication to **WPA-Enterprise** and data encryption to **TKIP**. Check the box for **Connect even if the network is not broadcasting**. Click the Next button in the bottom right corner of this window.

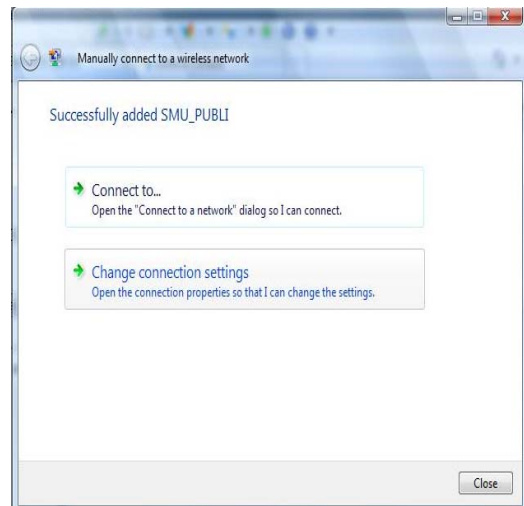


STEP 5

Click on the link for **Change connection settings**.

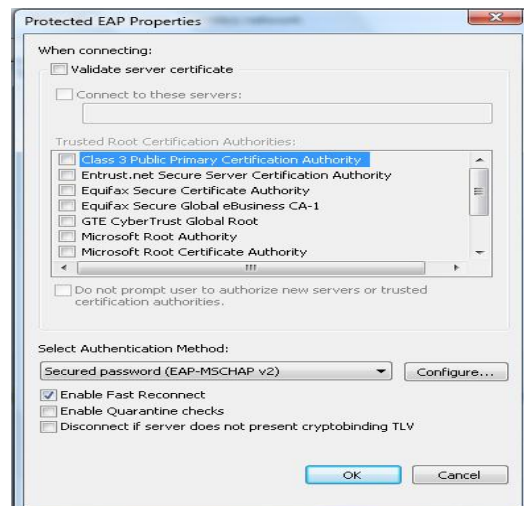
A new window will appear at this point with three check boxes on it.

UNCHECK the middle box and click on the **Security Tab**. Click on the **Settings** button next to the drop down window.



STEP 6

Uncheck "Validate server certificate" and make sure for Select Authentication Method, "**Secured password (EAP-MSCHAP v2)**" is enabled. Click on **configure** and go to Step 7. Ensure the check box for **Disconnect if server does not present cryptobinding TLV** is NOT checked.



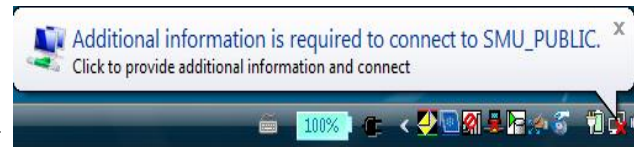
STEP 7

Uncheck the “Automatically use my Windows logon name and password (and domain if any)” box. Then keep clicking OK to get out of the wireless configuration.



STEP 8

Wait a few seconds and you should see something similar to this in your taskbar at the bottom of your screen. Click on the message and you should be prompted with a login window.



STEP 9

Enter your username and password, leave logon domain blank. Click OK.



For more information contact:

ITSS Help Desks
Loyola 268 &
The Atrium
Phone: 496-8111

Or visit: www.smu.ca/itss/wireless

